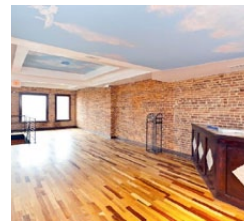
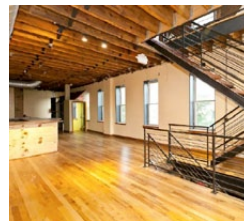
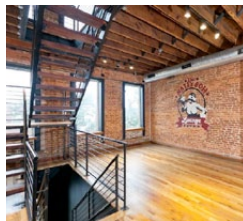


1028 S Conkling Street BALTIMORE, MD

RESTAURANT FOR LEASE



SIZE	4,530 SF 3-Level End-Unit Building
USE	Bar / Restaurant
LOCATION	Waterfront Neighborhood of Canton / Brewers Hill
AMENITIES	Existing Hood System in Kitchen & 6 ADA Restrooms
SPACE	Individual Bars on Each Level
VISIBILITY	Strong Corner Presence on Busy O'Donnell Street
RENT: \$4,000/mo. + NNN (1st & 2nd Floors)	

NEARBY TENANTS:

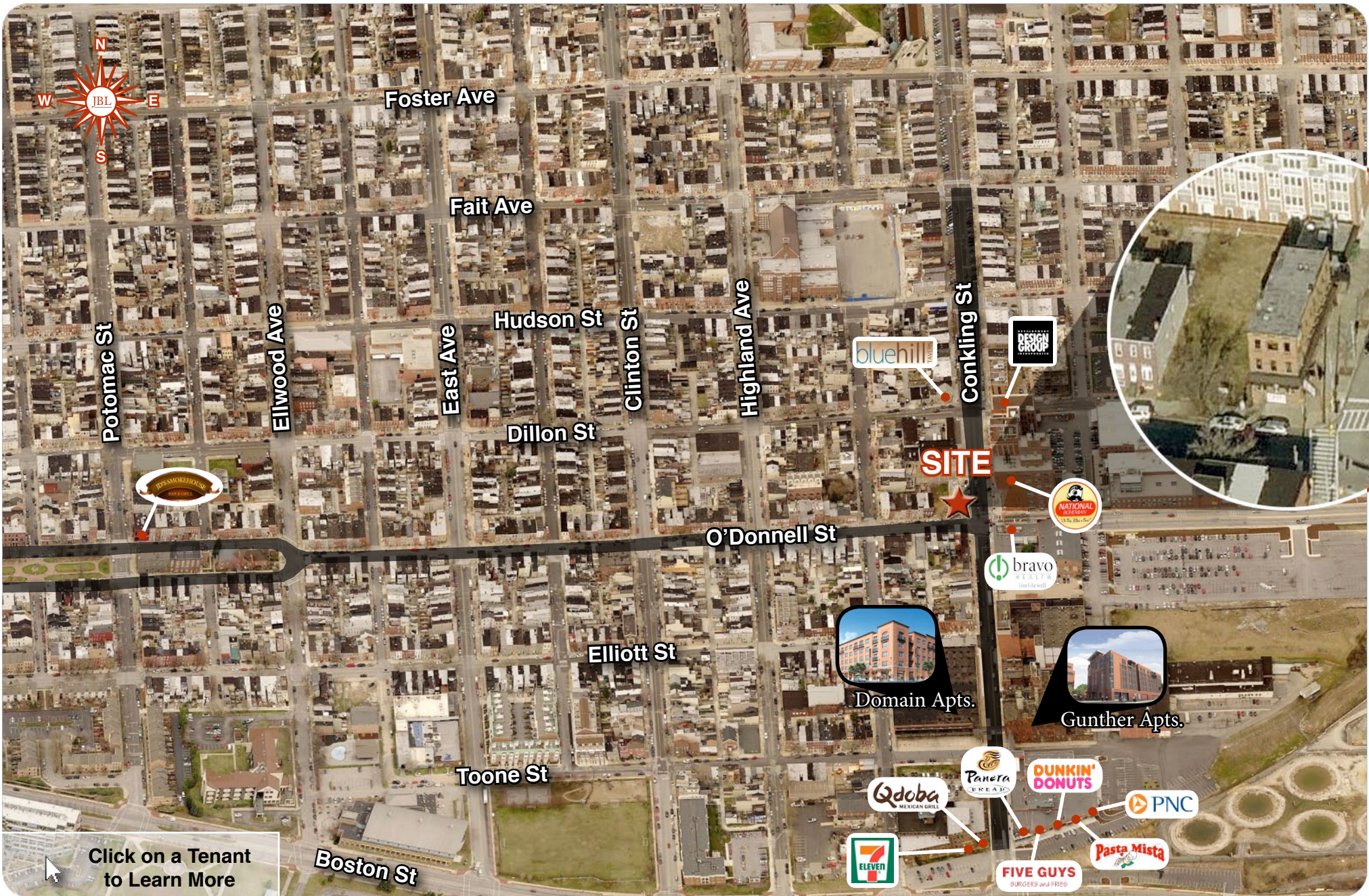


Henry Deford
henry@jblrealestatellc.com
Jeremy Landsman
jeremy@jblrealestatellc.com

CELL 410.303.2630
OFFICE 410.342.5263
CELL 410.984.2758
OFFICE 410.342.5263

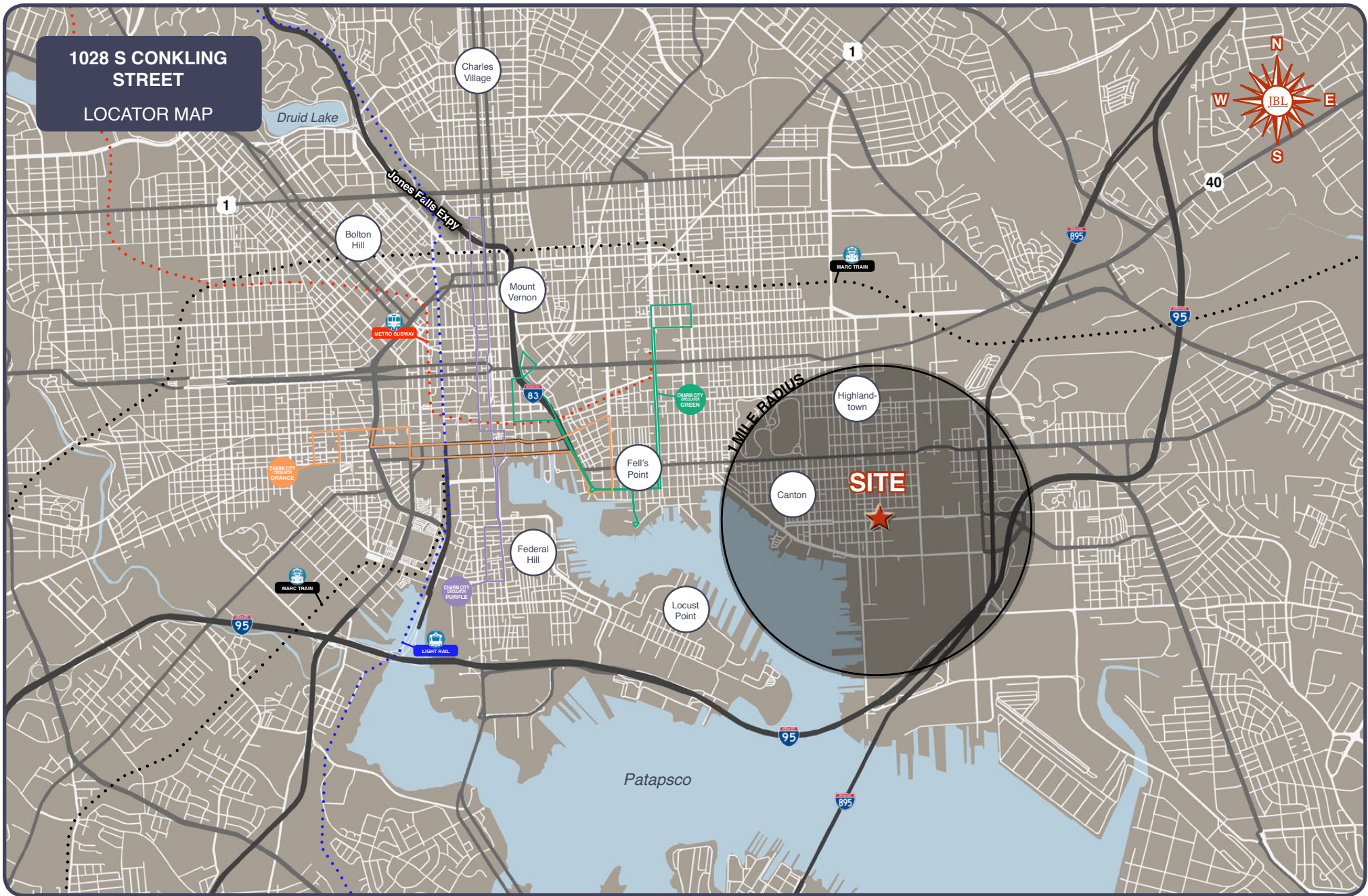
JBL REAL ESTATE LLC

2030 Aliceanna Street
Baltimore, MD 21231
www.jblrealestatellc.com



Henry Deford henry@jblrealestatellc.com	CELL 410.303.2630 OFFICE 410.342.5263
Jeremy Landsman jeremy@jblrealestatellc.com	CELL 410.984.2758 OFFICE 410.342.5263

JBL REAL ESTATE LLC | 2030 Aliceanna Street
Baltimore, MD 21231
www.jblrealestatellc.com



1028 S CONKLING STREET
LOCATOR MAP



Henry Deford henry@jblrealestatellc.com	CELL 410.303.2630 OFFICE 410.342.5263
Jeremy Landsman jeremy@jblrealestatellc.com	CELL 410.984.2758 OFFICE 410.342.5263

JBL REAL ESTATE LLC | 2030 Aliceanna Street
 Baltimore, MD 21231
www.jblrealestatellc.com