

1164 BLADENSBURG ROAD

FOR LEASE

RETAIL / RESTAURANT

1164 Bladensburg Road NE
Washington, DC 20002



SIZE 2,450 SF on 20,000 SF Lot

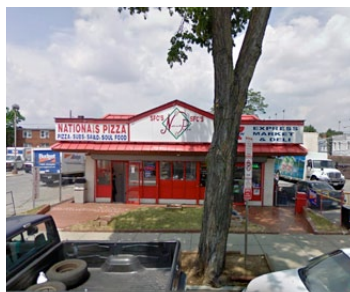
USE Restaurant / Convenience Store

LOCATION "Atlas District" - Blocks From H Street Corridor

PREVIOUS USE Previously Operated as a McDonald's

POTENTIAL Situated on Rapidly Growing Corridor

PARKING On-Site Lot Accomodating Ample Parking



RENT: Negotiable



For more information contact:

Jeremy Landsman
jeremy@jblrealestatellc.com

CELL 410.984.2758
OFFICE 410.342.5263

JBL Real Estate LLC
2030 Aliceanna Street
Baltimore, MD 21231
www.jblrealestatellc.com

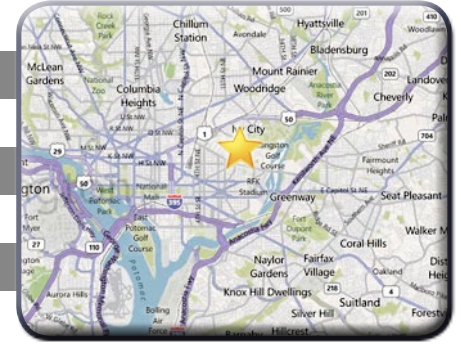
1164 BLADENSBURG RD

Atlas Junction

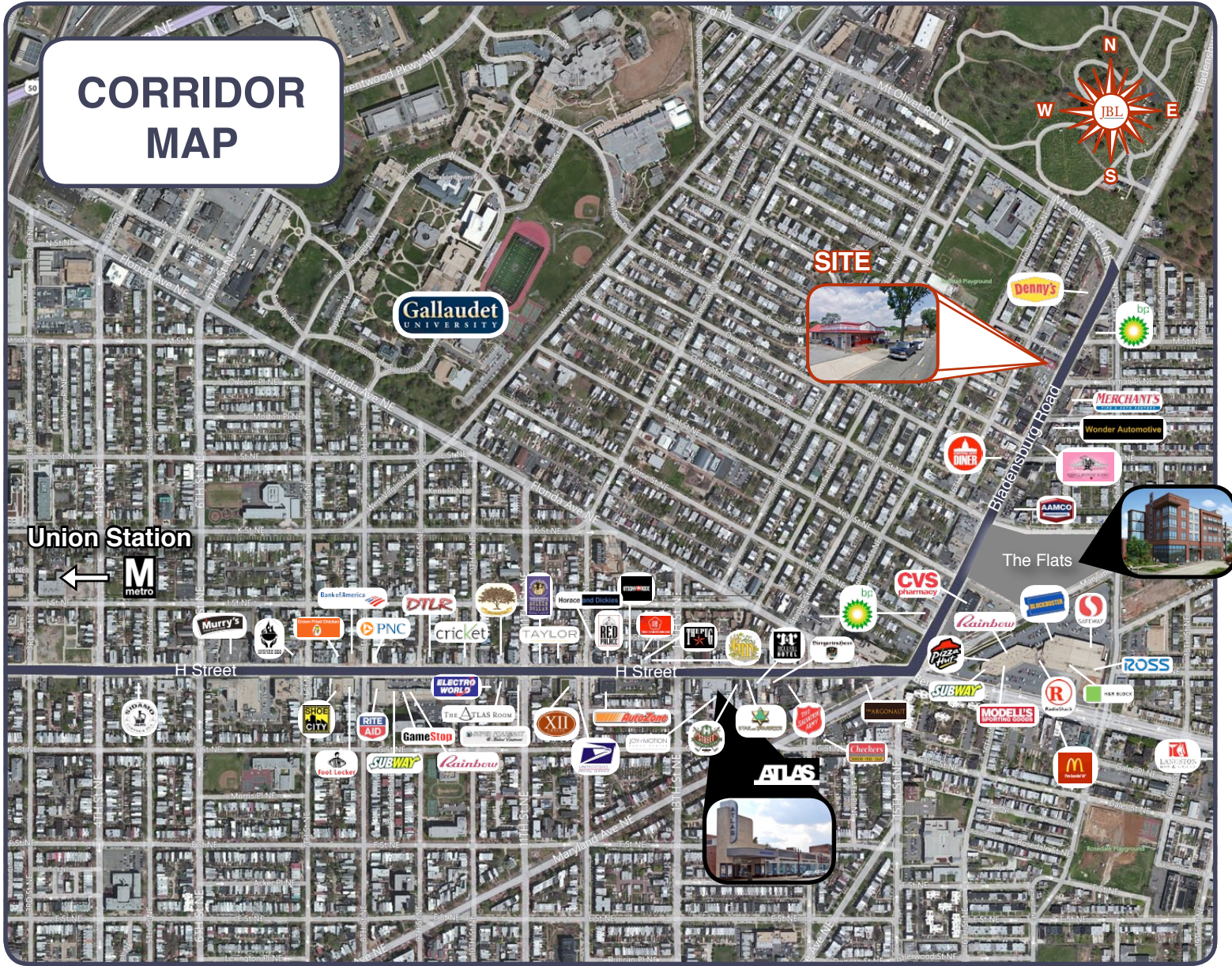
1164 Bladensburg Road NE
Washington, DC 20002

2,450 SF Retail/Restaurant Site
on a 20,000 SF Lot

Previously operated as a McDonald's and currently a convenience use. This property sits in NE DC's "Atlas District" by the retail-heavy H Street / Bladensburg Rd junction, as well as the recently developed "Atlas Flats", consisting of over 250 apartment units.



CORRIDOR MAP



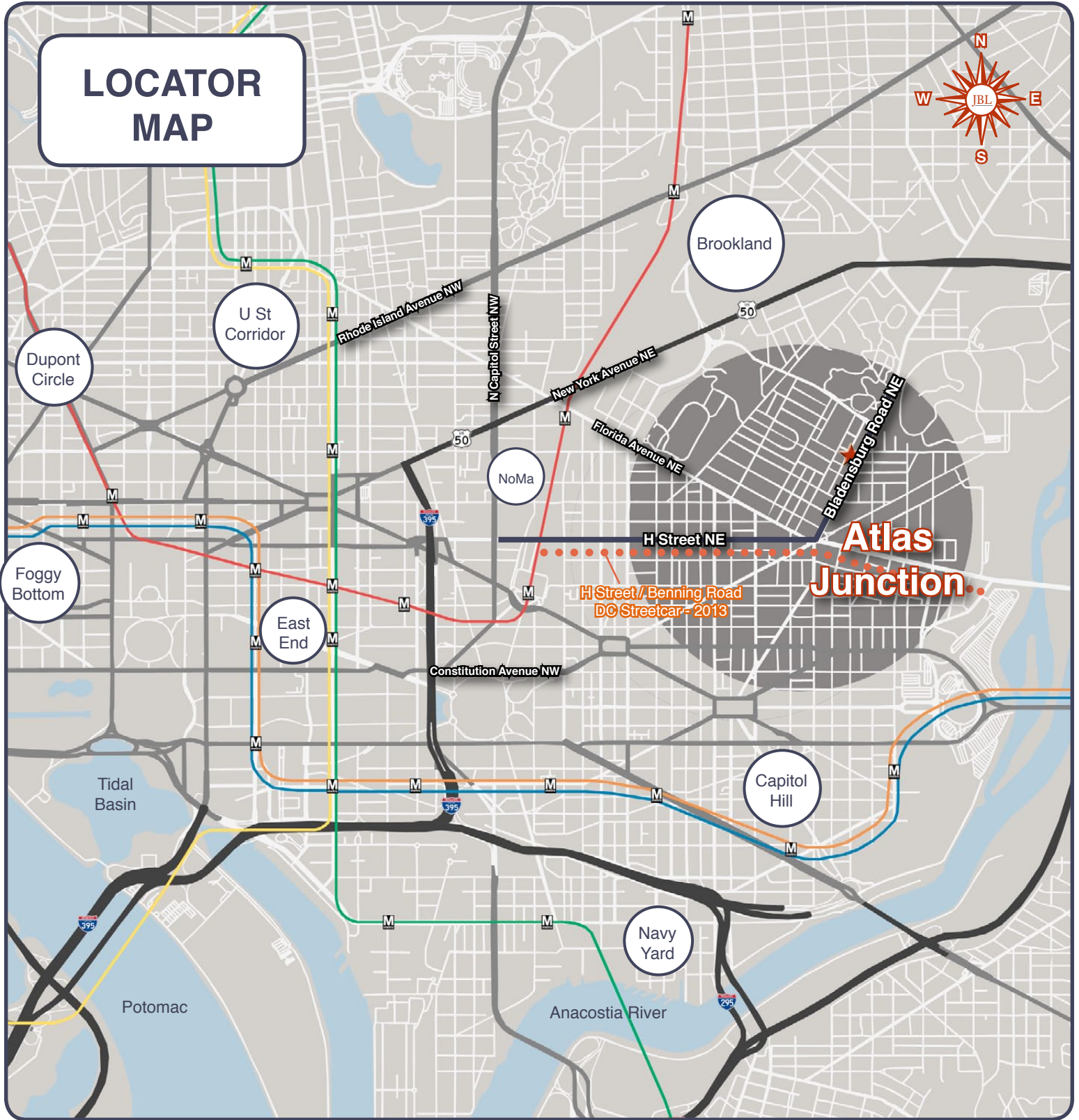
For more information contact:

Jeremy Landsman
jeremy@jblrealestatellc.com

CELL 410.984.2758
OFFICE 410.342.5263

JBL Real Estate LLC
2030 Aliceanna Street
Baltimore, MD 21231
www.jblrealestatellc.com

1164 BLADENSBURG ROAD



For more information contact:

Jeremy Landsman
jeremy@jbrealestatellc.com

CELL 410.984.2758
OFFICE 410.342.5263

JBL Real Estate LLC
2030 Aliceanna Street
Baltimore, MD 21231
www.jbrealestatellc.com