

339 N CHARLES STREET

FOR LEASE

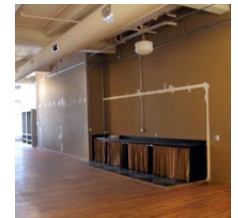
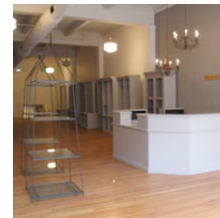
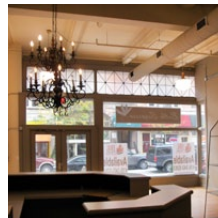
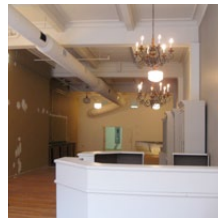
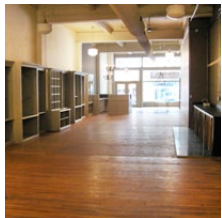
RETAIL / OFFICE

339 N Charles Street
Baltimore, MD 21201



SIZE	2,400 SF Storefront
USE	Perfect for Any Type of General Retail or Office
LOCATION	Busy Retail/Restaurant Corridor in Downtown Baltimore

CHARACTER	Historic Building, Exposed Ceilings
VISIBILITY	Great Signage Potential
PARKING	Underground Garage Available



RENT: \$2,500/mo. + NNN



Henry Deford
henry@jblrealestatellc.com

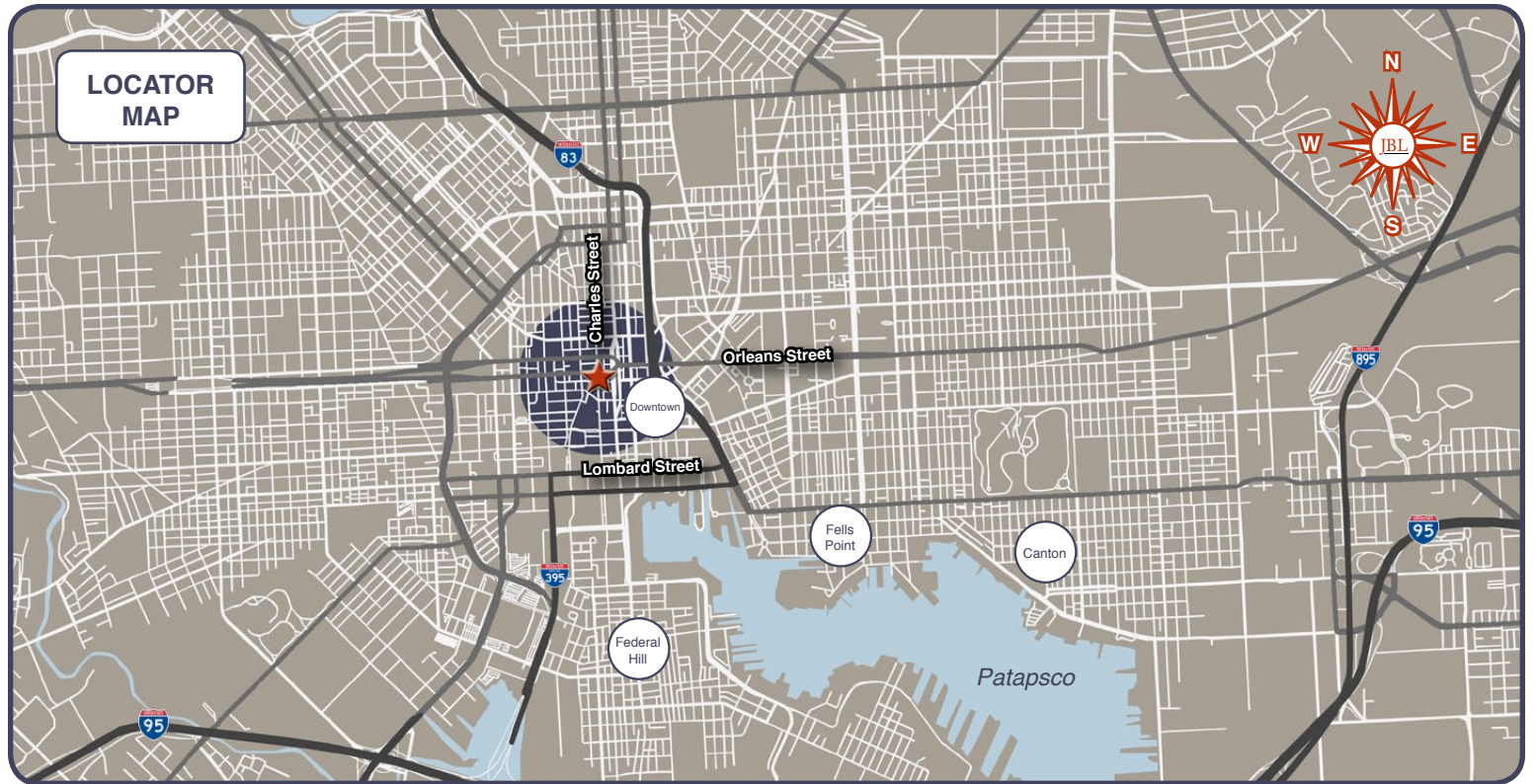
Jeremy Landsman
jeremy@jblrealestatellc.com

CELL 410.303.2630
OFFICE 410.342.5263

CELL 410.984.2758
OFFICE 410.342.5263

JBL Real Estate LLC
2030 Aliceanna Street
Baltimore, MD 21231
www.jblrealestatellc.com

339 N CHARLES STREET



Henry Deford
henry@jblrealestatellc.com

Jeremy Landsman
jeremy@jblrealestatellc.com

CELL 410.303.2630
OFFICE 410.342.5263

CELL 410.984.2758
OFFICE 410.342.5263

JBL Real Estate LLC
2030 Aliceanna Street
Baltimore, MD 21231
www.jblrealestatellc.com