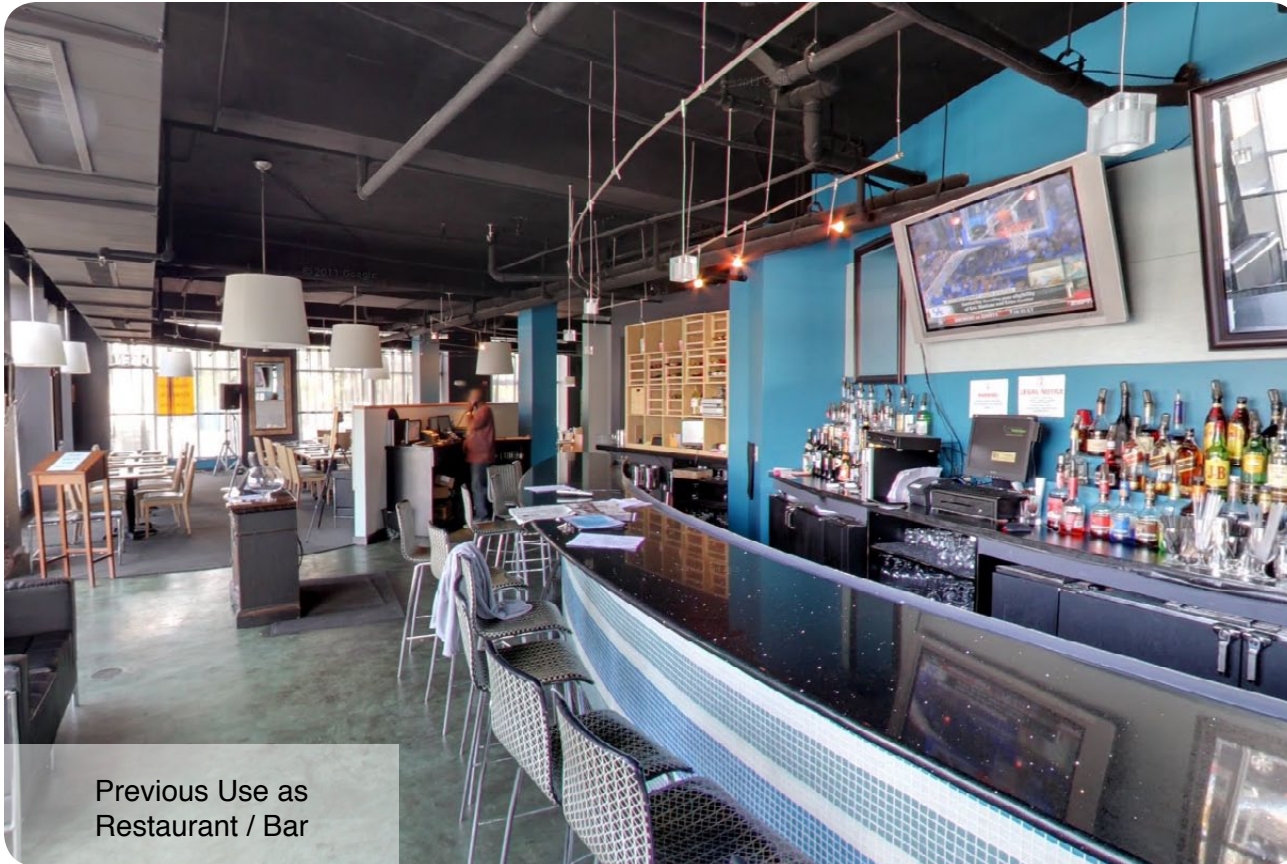


5832 Georgia Avenue WASHINGTON, DC

RETAIL FOR LEASE

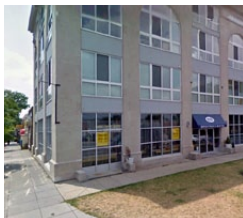
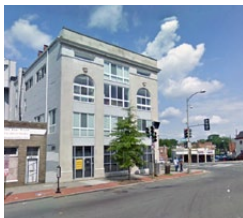
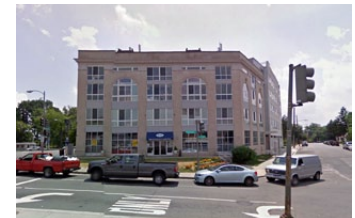


Previous Use as
Restaurant / Bar

SIZE	3,000 SF (previously "Brightwood Bistro")
USE	Turn-Key Restaurant/Bar w/ Liquor License
LOCATION	Signalized Intersection of Georgia & Missouri Ave
SPACE	Beautifully Designed w/ Modern Finishes
KITCHEN	Fully-Equipped w/ Hood System in Place
NEARBY	Newly Proposed Walmart Development
RENT: Negotiable	

NEARBY TENANTS:

Walmart 



For more information contact:

Jeremy Landsman
jeremy@jblrealestatellc.com

CELL 410.984.2758
OFFICE 410.342.5263

JBL REAL ESTATE LLC

2030 Aliceanna Street
Baltimore, MD 21231
www.jblrealestatellc.com



Click on a Tenant
to Learn More



For more information contact:

Jeremy Landsman
jeremy@jblrealestatellc.com

CELL	410.984.2758
OFFICE	410.342.5263

JBL REAL ESTATE LLC

2030 Aliceanna Street
Baltimore, MD 21231
www.jblrealestatellc.com