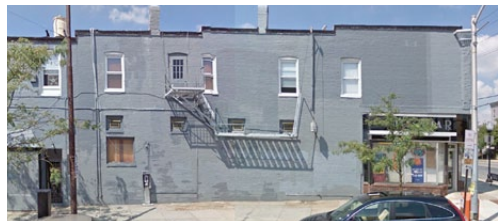
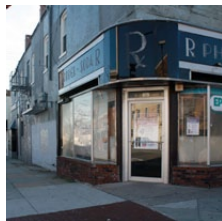


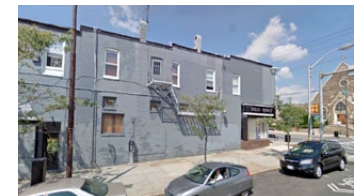
801 W 36th Street BALTIMORE, MD

RETAIL FOR LEASE



SIZE	1,440 SF + Basement
USE	Retail Storefront
LOCATION	"The Avenue" in Hampden's Popular Retail District
SPACE	Ability to Combine 2nd Floor for 2,880 SF
VISIBILITY	Highly Visible Corner on Busy W 36th Street
AREA	High Density Retail and Residential
POTENTIAL	Restaurant, Boutique, Retail, Convenience, Etc.
RENT: \$3,000/mo. + NNN	

NEARBY TENANTS:



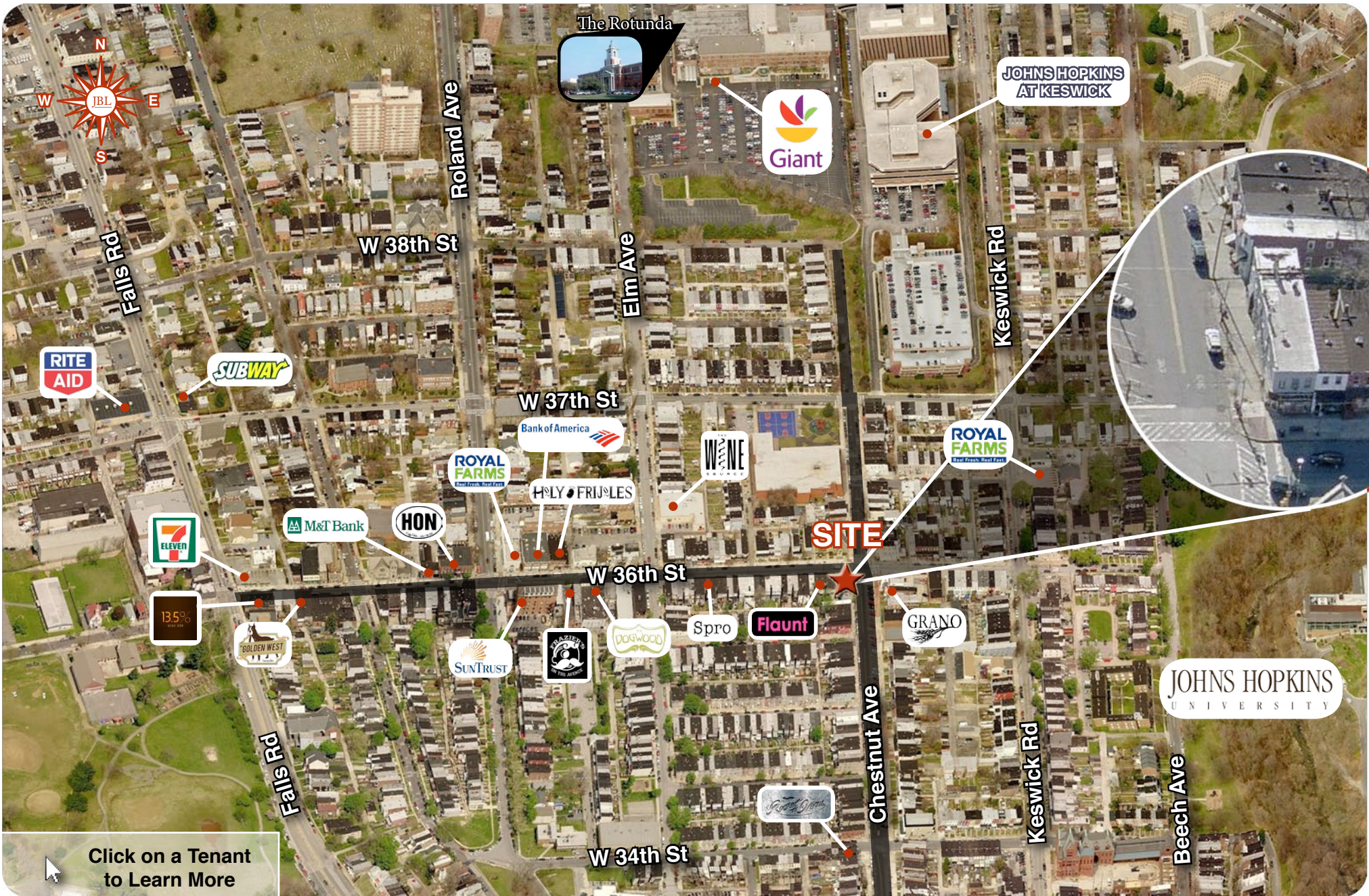
For more information contact:

Jeremy Landsman
jeremy@jblrealestatellc.com

CELL 410.984.2758
OFFICE 410.342.5263

JBL REAL ESTATE LLC

2030 Aliceanna Street
Baltimore, MD 21231
www.jblrealestatellc.com



SITE



Click on a Tenant to Learn More



For more information contact:

Jeremy Landsman
jeremy@jblrealestatellc.com

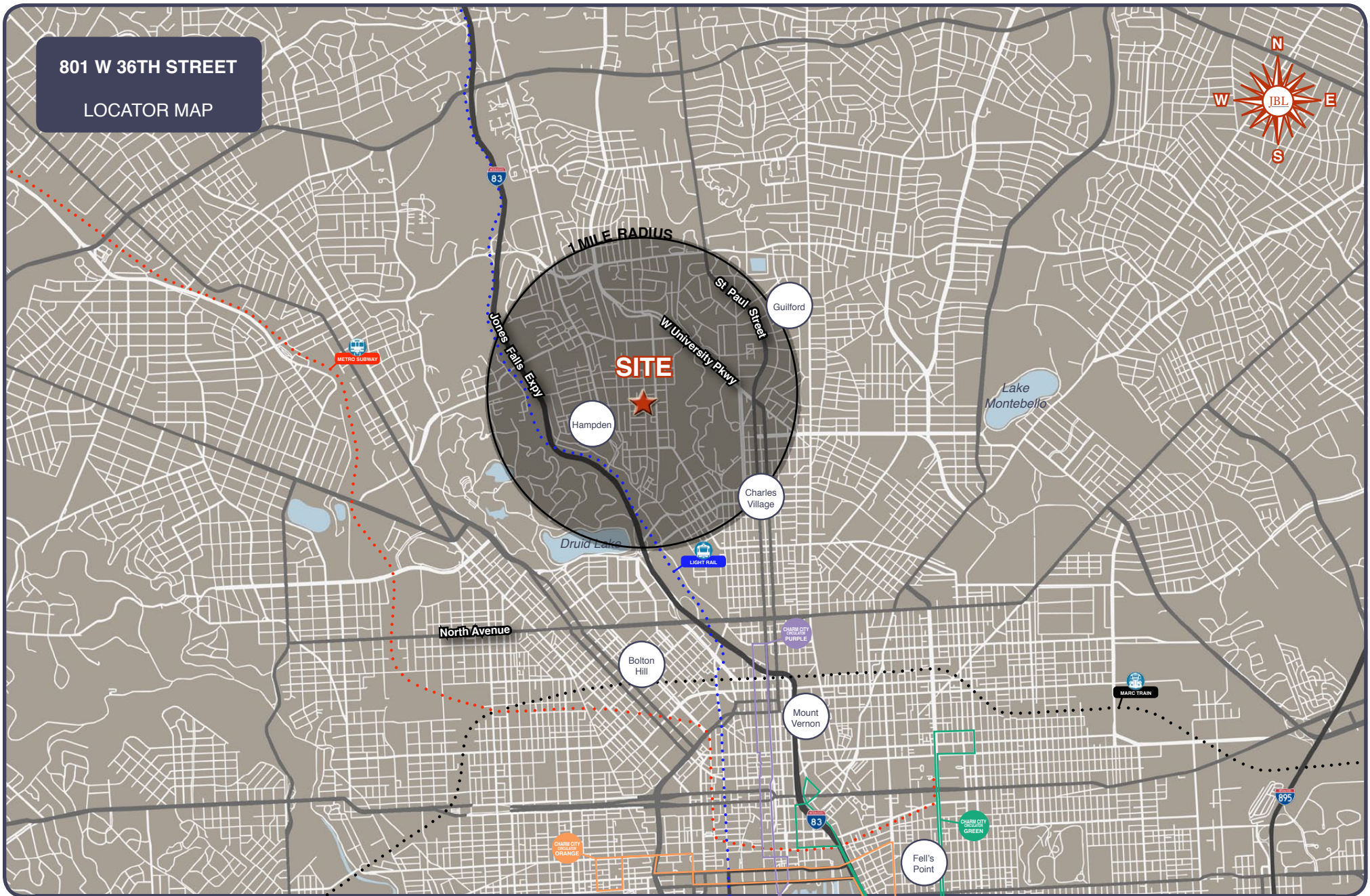
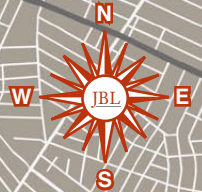
CELL 410.984.2758
OFFICE 410.342.5263

JBL REAL ESTATE LLC

2030 Aliceanna Street
Baltimore, MD 21231
www.jblrealestatellc.com

801 W 36TH STREET

LOCATOR MAP



For more information contact:

Jeremy Landsman
jeremy@jblrealestatellc.com

CELL 410.984.2758
OFFICE 410.342.5263

JBL REAL ESTATE LLC

2030 Aliceanna Street
Baltimore, MD 21231
www.jblrealestatellc.com